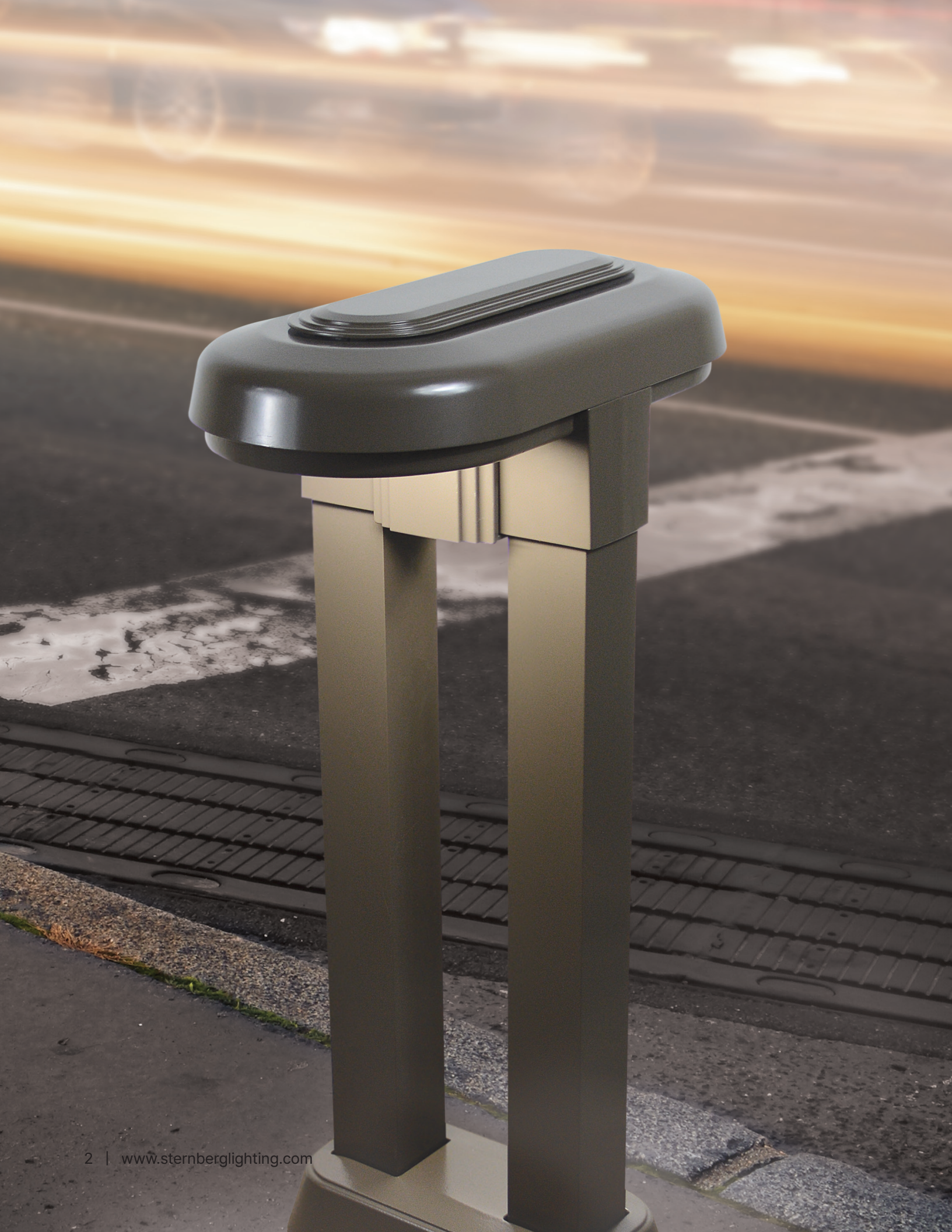


# Bollards





# Bollards

Decorative bollards both lit and unlit have been very popular for many years. They provide wayfinding and low level lighting that give an open feeling to a site during the day and a more intimate feeling during the night. Bollards provide a multitude of functions from lighting to barriers to power access to strictly decoration. Bollards can be either traditional or contemporary in style. Sternberg has a wide variety of bollard style options.

## Features

- 3** Introduction
- 5** Styles
- 7** Features
- 8** Comparative Matrix
- 11** Quick Release



# Styles

Sternberg bollards follow the family concept and are one of the more important elements in any family due to their pedestrian appeal. Traditional bollards are rooted in a multitude of pole base options Sternberg has to offer. Each Sternberg pole base casting can be transformed into a lit or unlit bollard simply by adding a short section of pole shaft.

Each family of luminaire products has at least one bollard style member in it. The form factor of each bollard blends harmoniously with its family so that a project sight can flow from the parking lot to the walkway to the building or green space with a continuous design style that looks seamless and is pleasing to the eye.

## QUICK FACTS

- Bollards are available in LED light sources as well as HID.
- Sternberg bollards are robust heavy cast construction.
- When lit bollards are specified Sternberg has been careful to design with non-glare optics and lenses.
- All bollards are polyester powder coated inside and out for corrosion protection.
- Direct burial and quick disconnect models are also available.
- Internal lens assembly for vandal resistance.



Augusta  
Bollard



Prairie  
Bollard



Euro  
Bollard



Solana  
Bollard



Millenia  
Bollard

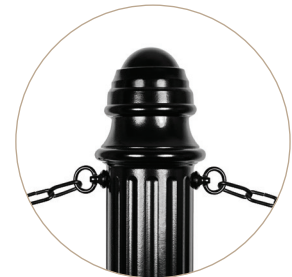


Lunaria  
Bollard



# Features

Although bollards are small packages they are built for great utility having options for chains, power receptacles, locking doors, lit and unlit versions, and mounting options that include quick removal and direct burial versions.



Optional Chain Loops



Unlit Bollard



Access Door

# Bollard Matrix



E250/E260-340  
Euro



E250/E260-346  
Euro



E250/E260-887  
Euro



FL300LED  
Flight Bollard



LU300  
Lunaria Bollard



ML360  
Millenia



RT4  
Rialta Bollard



RW3xx  
Rialta Bollard



RW4  
Rialta Bollard



SL300/SL302  
Solana



SL360  
Solana



230  
Manor I



340B-803  
340BLED-803  
Harbortown



650  
Milford



720  
Tinley



730  
Prairie



740  
Paragon



806LED-346B  
Harbortown  
Series



2501  
Lincoln



3401  
Georgetown



3701  
Virginia



3801  
Leesburg



3901  
Richmond



4201  
Augusta



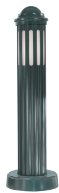
4401  
Denver



4501LB  
Decatur



4555  
Parkside



4577  
Norwood



4701  
Austin



4801  
Springfield



5201  
Barrington



5301  
Kenilworth



5601  
Louisville



5701  
Plainfield



5801  
Boston



6201  
Oxford



6301  
Scottsdale



6601  
Morristown



7701  
Birmingham



8301  
Baltimore



8401  
Monrovia



8701  
Geneva



FIXTURE	DIMENSIONS		LED	HID OPTICS					LIGHT DISTRIBUTION				
	Base	Height		HPS	MHP	CFL	INCAND	UNLIT	2	3	3R	4	5
E250/E260-340 Euro	8"	50"	■	■	■	■	■			■			■
E250/E260-346 Euro	6"	50"	■	■	■	■	■			■			■
E250/E260-887 Euro	11-7/8"	50"	■	■	■	■	■			■			■
FL300LED Flight Bollard	5"	Varies	■										■
ML360 Millenia	11"	3' - 8'*	■						■		■	■	■
LU300 Lunaria	36"-48"	Varies	■										■
RT4 Rialta Bollard	8"	36"-48"	■						■	■	■	■	■
RW3xx Rialta Bollard	6"	Varies	■										■
RW4 Rialta Bollard	8"	36"-48"	■										■
SL300 Solana	14"x7.5"	3' - 8'*	■							■			■
SL302 Solana	14"x7.5"	3' - 8'*	■							■			■
SL360 Solana	10"	3' - 8'*	■						■	■	■	■	■
230 Manor I	7-1/2"	28"	■	■	■	■	■	■					■
340B-803 Harbortown	8"	60-3/8"		■	■	■	■	■					■
340BLED-803 Harbortown	8"	60-3/8"	■							■			■
346B-806 Harbortown	6"	59-3/4"		■	■	■	■	■					■
650 Milford	15"	42"	■	■	■	■	■	■					■
720 Tinley	7"	48"	■	■	■	■	■	■					■
730 Prairie	7"	48"	■	■	■	■	■	■					■
740 Paragon	7"	48"	■	■	■	■	■	■					■
806LED-346B Harbortown Series	9-1/2"	48"	■							■		■	■
2501 Lincoln	20"	55"	■	■	■	■	■	■					■
3401 Georgetown	18"	47"	■	■	■	■	■	■					■
3701 Virginia	11-3/4"	50-1/2"	■	■	■	■	■	■					■
3801 Leesburg	15"	37"	■	■	■	■	■	■					■
3901 Richmond	11-1/2"	42"	■	■	■	■	■	■					■
4201 Augusta	17"	42"	■	■	■	■	■	■					■
4401 Denver	18"	42"	■	■	■	■	■	■					■
4501LB Decatur	10-1/2"	32"	■	■	■	■	■	■					■
4555 Parkside	9"	42"	■	■	■	■	■	■					■
4577 Norwood	12"	42"	■	■	■	■	■	■					■
4701 Austin	10"	45"	■	■	■	■	■	■					■
4801 Springfield	10-1/2"	46-3/4"	■	■	■	■	■	■					■
5201 Barrington	20"	50"	■	■	■	■	■	■					■
5301 Kenilworth	17-1/2"	50"	■	■	■	■	■	■					■
5601 Louisville	17-1/2"	50"	■	■	■	■	■	■					■
5701 Plainfield	17-1/2"	50"	■	■	■	■	■	■					■
5801 Boston	17-1/2"	39-1/2"	■	■	■	■	■	■					■
6201 Oxford	18"	48"	■	■	■	■	■	■					■
6301 Scottsdale	17-1/2"	45-1/2"	■	■	■	■	■	■					■
6601 Morristown	14"	50"	■	■	■	■	■	■					■
7701 Birmingham	16"	51"	■	■	■	■	■	■					■
8301 Baltimore	19"	60"	■	■	■	■	■	■					■
8401 Monrovia	15"	48"	■	■	■	■	■	■					■
8701 Geneva	11"	45"	■	■	■	■	■	■					■



# Quick Release

## QR - QUICK RELEASE

In some specialized cases the need for bollards to be removable is desired. Sternberg's quick release bollard assembly allows for a bollard to be released from its mounting completely and removed for vehicular or pedestrian access. Sternberg has designed a bollard mounting that accomplishes this mechanical action with ease.

An anodized tube assembly (see Fig. 1) is buried in the ground. This tube has an access slot for power conductors to feed up through the assembly. It also has an anchor point for a retention cable that will secure the bollard to the ground. The Bollard when ordered as quick disconnect comes with a tail piece that when installed slips into the buried tube (see Fig. 2).

At this point if the bollard is a lit version the installer reaches through the hand hole and connects the power via a keyed quick connect power lead. Whether the bollard is lit or unlit step four is to pull the retaining cable (not shown) up into the base of the bollard and secure with a padlock or other locking mechanism. The finished installation leaves the bollard mounted at ground level and locked to the underground tube securely (see fig. 3).



Figure 1



Figure 2

Figure 3





**Located in Roselle, Illinois  
Engineered, Tested and Assembled in the USA!**

Sternberg has created a legacy of old world craftsmanship that dates back to the company's inception in 1923. The work ethic and product innovations that made the early Sternberg company successful are still being practiced by our employees today. Our dedicated staff, attention to detail, and quality production processes are what make Sternberg a world class company.

Sternberg serves the municipal, landscape, higher education and commercial markets providing efficient and cost effective lighting solutions to the outdoor market.

See our complete catalog online at:  
[www.sternberglighting.com](http://www.sternberglighting.com)



555 Lawrence Ave., Roselle IL 60172

800-621-3376 | [contactus@sternberglighting.com](mailto:contactus@sternberglighting.com) | [sternberglighting.com](http://sternberglighting.com)